



CHÂTEAU

PECH·LATT



WHERE ARE WE ?

Located in the town of Lagrasse, Chateau Pech-Latt is situated at the heart of Languedoc.

It covers more than **400 hectares**, including **160 hectares of vines**, classified as AOC Corbières. 100 hectares in one piece directly around the Chateau.







FROM OCCITAN MEDIEVAL ROOTS TO THE RENEWAL

Since the 12th century, the monks of Lagrasse Abbey undertook the exploitation of the lands of Pech-Latt. Initially intended for cereal farming and livestock, these lands also revealed remains of viticulture dating back to 1634. Over the centuries, grape cultivation became the main activity, especially in the early 20th century.

Pech-Latt, meaning "top of a wide hill" in Occitan, echoes the hilly expanse of the estate, which unfolds in a natural circus-shaped setting, surrounded by hills and garrigue (Mediterranean scrubland). Situated at an altitude of 150 meters, at the foot of the Alaric mountain, this estate enjoys an exceptional terroir, preserving the freshness of its soils thanks to the surrounding mountain foothills and the characteristic winds of the region.



CHATEAU PECH LATT HISTORY

FROM 779 TO 1903

This part of Occitania is known for its history of reform, culture, and religious orthodoxy. Charlemagne established the Abbey of Lagrasse in 779, and the Benedictine monks started cultivating vines around the year 784. In the 12th century, there was evidence of an existing church in Pechlat among the possessions of these monks.

A farm was created there in 1499 to manage the land for crops and livestock. By 1634, there was mention of a primitive vineyard at Pech-Latt. This activity became dominant in 1903, alongside olive cultivation, cereal crops, poultry, and horse breeding.





CHATEAU PECH LATT HISTORY

FROM 1968 TO 1994

In 1968, Pech-Latt became one of the first chateaux in the Corbières region to crush and ferment grapes. Three years later, the first bottling took place at the Chateau, where all the production is now vinified. From 1970, Chateau Pech-Latt stopped using chemical herbicides.

In 1991, Chateau Pech-Latt embraced strict organic viticulture principles, and it has been committed to maintaining the highest quality ever since. It was one of the earliest vineyards in the South to make this transition.

The first certified organic vintage by Ecocert was produced in 1994. In 1998, the wines of Chateau Pech-Latt were also certified by Bio Suisse Organic.



*« Unveiling a wild Eden,
a true gem of preserved nature,
between mountains and sea. »*





CHATEAU PECH LATT HISTORY

FROM 1970'S UNTIL TODAY

Owned by the Andre family, Chateau Pech-Latt changed hands in the 2000's and became the treasure of the Subotic family, captivated by this unique and wild place where the wines express exceptional micro-terroirs.

The family is deeply committed to caring for this remarkably unique heritage. They endeavor to restore the historical Chateau and its winery with the assistance of top architects and artisans, to study the micro-terroirs : soils, grape varieties and the biodiversity of the vineyard, and to look after this heritage in order to preserve it most effectively in the long term. The dawning of a promising renewal.

OUR VINEYARD



Exceptional geographic situation :

- In the heart of a natural circle between land and sea (40 km)
- Surrounded by hills and scrubland classified Natura 2000 site (biodiversity protection at the European scale)
- Altitude of 150 meters at the foot of Alaric mountain (600 meters high)

Mediterranean climate

- Sun
- Influence of 7 winds : Tramontane, Marin, Grec, Sud...



OUR VINEYARD



Our philosophy

The respect of Mother Earth, preserving this wild Eden and magnifying this true gem in Languedoc.

Pioneer of organic farming in France

- Herbicides free since the 1970's
- Engaged in the organic farming certification for more than 30 years – no use of harmful chemicals
- One of the very first estates certified organic in France, in 1995 – Ecocert / AB
- Certified Bio Suisse in 1998

Unique Biodiversity

- Sheepfold with 250 sheep
- Really rare species of bats living on the estate (current scientist researches)



OUR VINEYARD



Main grape varieties

- Carignan
- Grenache
- Mourvèdre
- Syrah
- Marsellan

Main soil types

Clay-limestone soils, sandy soils & ferrous clay soils

Planting density

4000 vine plants/hectare





CRITICS REVIEW

MEMOIRE D'ALARIC 2020

Very elegant riped cherry nose with sweet vanilla oak leads to a juicy supple palate of perfectly ripened fruit with satifyingly long kirsh finish.

DECANTER

TERRES MURES 2021

Notes of spices, dark fruits, tar, garrigue and savoury undertones. Dry on the palate, weighty.

DECANTER

GRAND VIN 2022

Intense ruby color, purple highlights, lovely rich nose of black and red fruits with vegetal and peppery notes. The palate charms with its power combined with a touch of sweetness. A firm hand in a velvet glove. Beautiful mineral freshness on the finish.

GILBERT ET GAILLARD

GRAND VIN 2021

Red color with violet reflections, a vibrant nose of wild red and black berries, ripe blackberries, blackcurrants, and redcurrants. Subtle background of sweet spices, a palate with expansive fragrance qualities built on well-ripened fruit without excessive heat. A delightful finish.

GILBERT ET GAILLARD

GRAND VIN 2020

Fruity nose with notes of cherry, strawberry, and herbal hints. It offers a gentle sweetness and well-ripened tannins. A unifying Corbières wine to pair with grilled red meat.

GUIDE HACHETTE



RECENT POINTS AND MEDALS



ROBERT PARKER
GRAND VIN 2021
86/100



AMPHORE
PIERRE GUIGUI
ILE ARDENTE 2021
89/100
SILVER MEDAL

bettane +
desseauve

PRIX PLAISIR
BETTANE ET DESSEAUVE
GRAND VIN 2020
SILVER MEDAL

LE GUIDE
HACHETTE
DES VINS

GUIDE HACHETTE
GRAND VIN 2020
ONE STAR

GILBERT & GAILLARD
INTERNATIONAL CHALLENGE

GILBERT & GAILLARD
GRAND VIN 2022
90/100
DOUBLE GOLD MEDAL

GILBERT & GAILLARD
GRAND VIN 2021
90/100
DOUBLE GOLD MEDAL



DECANTER
TERRES MĀRES 2021
86/100
BRONZE MEDAL

DECANTER
MEMOIRE D'ALARIC
95/100
GOLD MEDAL

ONE YEAR OF WINEMAKING BEGINS



Bourgeons d'hiver
Repos hivernal, bourgeons recouverts par 2 écailles brunâtres
Winter buds
Winter rest, buds covered by 2 brownish scales

Pleurs
Réveil de la vigne. La sève s'écoule par les plaies de taille
Bleeding
Vine awakening. The sap flows from pruning cuts



Bourgeons dans le coton
Les écailles s'écartent et laissent apparaître la bourre
Wooly buds
The scales separate, giving way to the bud down



Pointe verte
L'extrémité verte de la jeune pousse des feuilles est visible
Green tip
The young leaf shoot's green tip is visible



Sortie des feuilles
Apparition des feuilles rassemblées en rosette
Leaves appear
Appearance of leaves in a rosette



Feuilles étalées
Les feuilles se développent et s'étalent
Leaves unfold
The leaves grow and unfold



Grappes visibles
Les inflorescences sont visibles
Bunches visible
Inflorescences visible



Grappes séparées
Les inflorescences grandissent et se séparent
Bunches separated
Inflorescences elongate and separate



Boutons floraux séparés
Les futures fleurs se séparent les unes des autres
Separated flower buds
The future flowers separate from each other

hiver/winter

printemps/spring

automne/autumn

été/summer



Chute des feuilles
Les sarments sont tous bruns, les feuilles se colorent et chutent. C'est le début de la phase de repos
Leaves fall
The canes are all brown, the leaves change colour and fall. This is the beginning of the dormancy



Maturité - récolte
Les baies sont mûres, leur développement est terminé. L'analyse de leur composition permet d'établir leur niveau de maturation et de vendre au bon moment
Ripeness - harvest
The berries are ripe, their growth complete. Composition analysis establishes their maturity level in order to harvest at the right time



Vérailson
Les baies changent progressivement de couleur. La grappe devient plus compacte. Les sarments deviennent bruns : c'est le début de l'aocilement
Verailson
The berries progressively change colour. The bunch becomes more compact. Vine shoot turn brown: lignification begins



Fermeture de la grappe
Les baies grossissent et commencent à se toucher
Bunch closure
The berries grow and start to touch each other

Petits pois
Les baies atteignent 50 % de la taille finale. La grappe bascule en position verticale
Peas
The berries reach 50% their final size. The bunch falls to a vertical position



Nouaison
Les fleurs sont fécondées, de petites baies vertes se forment
Fruit set
The flowers are fertilized, small green berries form



Floralison
Les fleurs apparaissent (1 fleur par bouton floral)
Flowering
The flowers appear (1 flower per flower bud)



CHATEAU
PECH-LATT

OUR WORLDWIDE DISTRIBUTION





OUR VINEYARD

DISCOVER THE MAIN GRAPE VARIETIES OF CHÂTEAU PECH-LATT



GRENACHE



CARIGNAN



SYRAH



MOURVEDRE

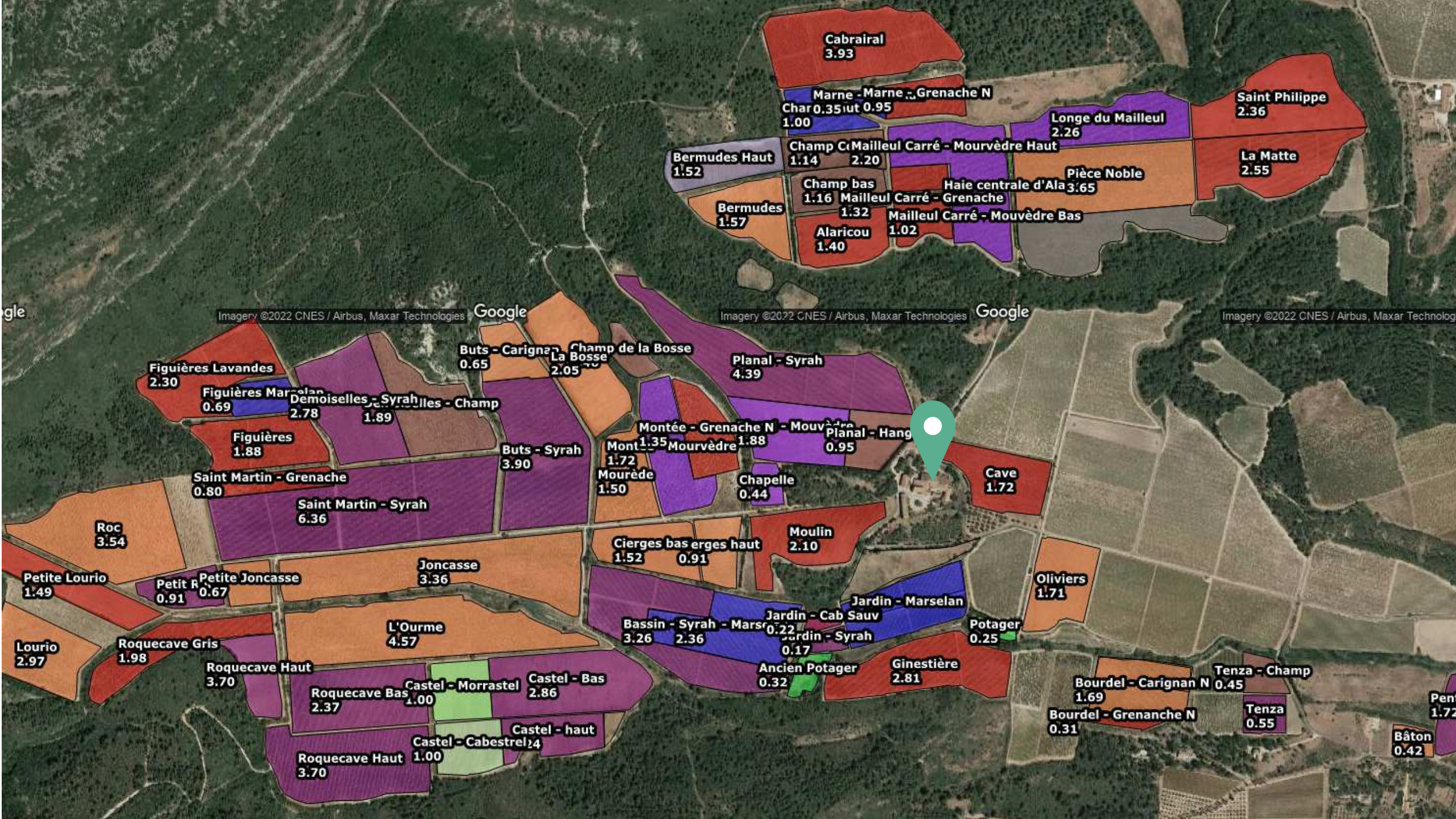


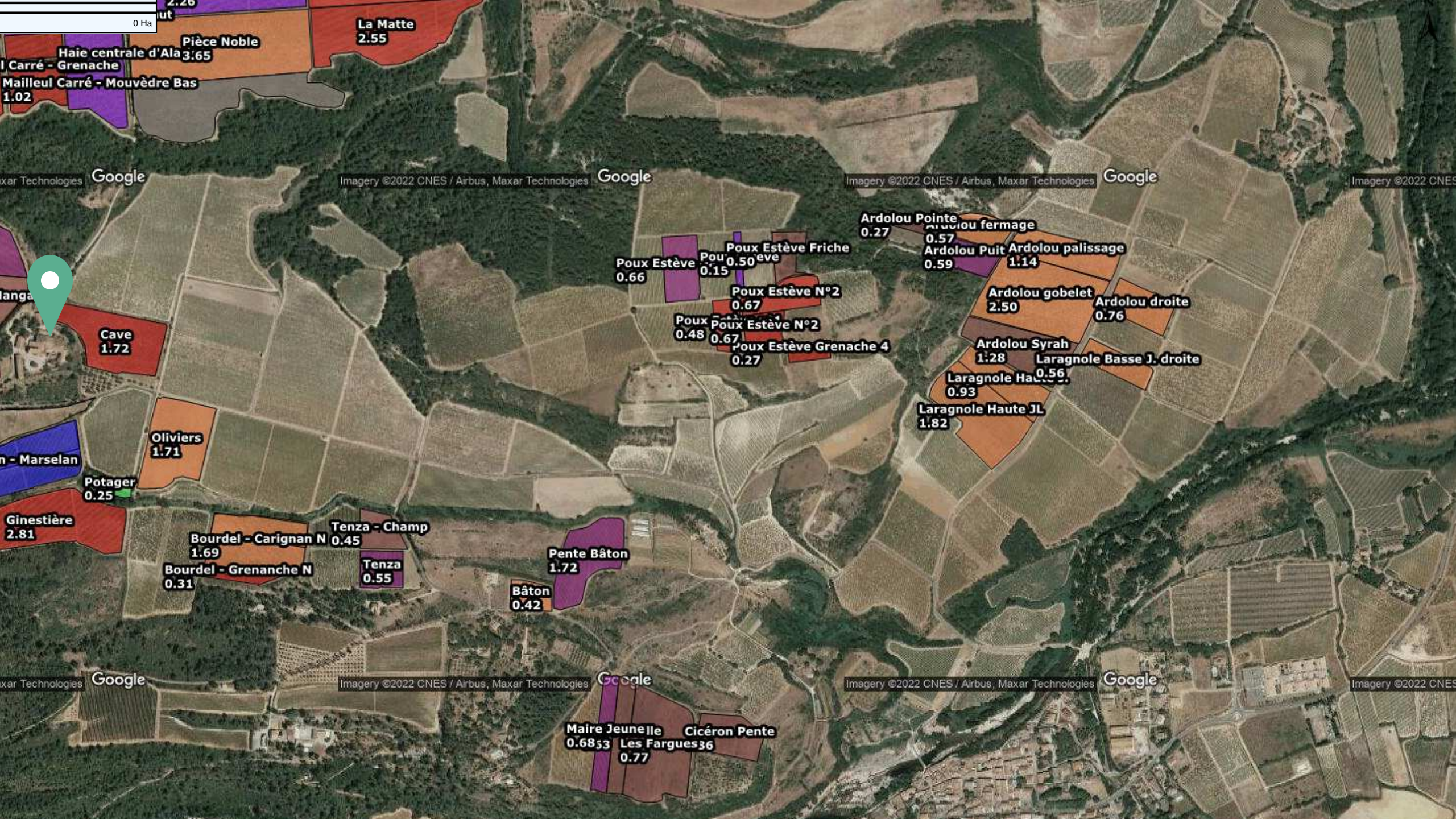
MARSELLAN

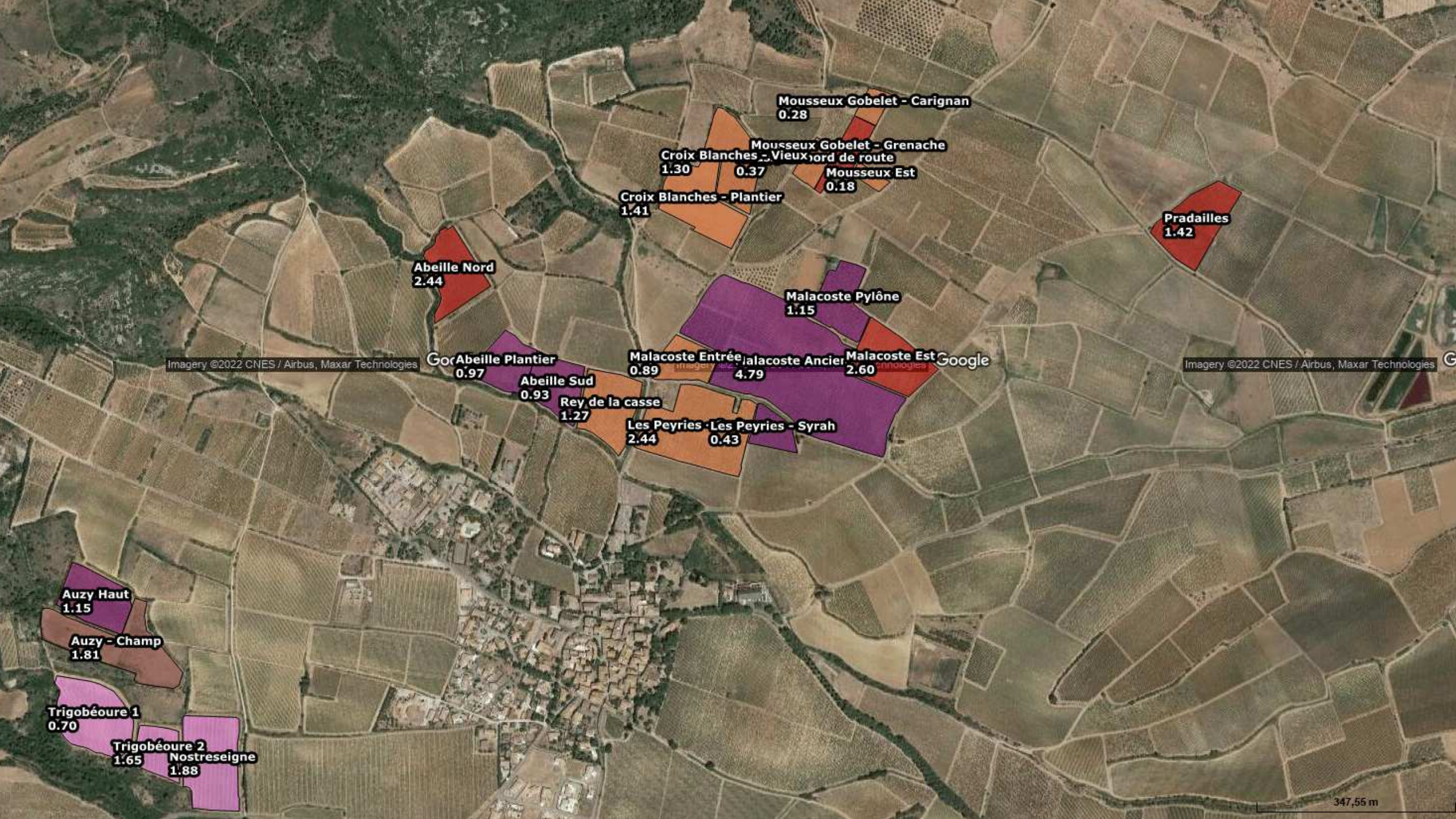
120 HECTARES

40 HECTARES

(AND OTHERS)







Mousseux Gobelet - Carignan
0.28

Mousseux Gobelet - Grenache
Croix Blanches - Vieuxord de route
1.30 0.37

Mousseux Est
0.18

Croix Blanches - Plantier
1.41

Abeille Nord
2.44

Pradailles
1.42

Malacoste Pylône
1.15

Imagery ©2022 CNES / Airbus, Maxar Technologies

GorAbeille Plantier
0.97

Malacoste Entrée
0.89

Malacoste Ancier
4.79

Malacoste Est
2.60

Google

Imagery ©2022 CNES / Airbus, Maxar Technologies

Abeille Sud
0.93

Rey de la casse
1.27

Les Peyries - Les Peyries - Syrah
2.44 0.43

Auzy Haut
1.15

Auzy - Champ
1.81

Trigobéoure 1
0.70

Trigobéoure 2
1.65

Nostreseigne
1.88

RENEWAL



A dedicated team

- 12 people
- Including 6 tractor drivers with a deep knowledge of the different plots
- A high-level technical expertise regarding overall vineyard management
- 160 hectares of vines entirely handpicked



RENEWAL



Take care of our heritage

Main investments to restore the estate

- Complete restoration of the cellar : Combinaison of traditional historical concrete tanks + new thermo-regulated stainless steel tanks since 2023)
- Gravity fed winery
- Restoration of the Chateau itself (roof, walls) with local craftsmen

Listening to the vineyard, improve quality:

- Vineyard monitoring & low-yields management
- Development of plot selection
- Massale selection (old Carignan and Grenache vines)



RENEWAL



New brand identity

- The perfect balance between tradition and modernity
- New logo: our cypresses (at the entrance of the Chateau)
- Each label unveils the artwork of a famous french artist Philippe Pierrelée, illustrating the main part of the estate.
- New names for our cuvées : terroirs & history



HARVEST & WINEMAKING



Harvest

- 160 hectares - 100% hand-picked harvest
- More than a month of human work in order to preserve our vines, to select the best high quality grapes, and to protect berries from oxidation. We pay attention to any details.

Winemaking

- 100% destemmed
- In 2022 : 8 to 12 days of vatting, followed by several months of maturation in 300 hl concrete tanks
- Delicate and slow cellar work with repeated small pumping over to gently extract the aromas and the silkiest tannins.





SUSTAINABILITY



Strategies for managing natural resources and adapting our vineyard to climate changes

Implement a 5 years vineyard management plan

Plant the appropriate grape variety on the right plot depending on :

- Scientist soil analysis
- Wind factor
- Sun exposure

Manage water

- Vines have access to natural deep water
L'Orbieu river – our micro-terroirs keep freshness
- 3 water containment basins in order to preserve wildlife (project)



SUSTAINABILITY



Strategies for managing natural resources and adapting our vineyard to climate changes

Adapt the viticulture methods accordingly

- Test new vegetal material such as rootstocks adapted to climate changes
- Choose the right pruning method (Gobelet, Guyot simple, Guyot double, Cordon de Royat)

Choose eco-friendly packaging

- Light glass bottles limit our carbon footprint
- Aluminium cap 100 % recyclable
- Paper and cardboard from sustainably managed forests & non polluting inks



OLD VINES HERITAGE



Our mission : Preserve the genetic heritage of the vineyard

- Our eldest vines and rootstocks was planted around the Second World War period around 1945. This is major discovery when we know that nowadays the average life of a vine is 20 to 25 years.
- Very old Carignan and Grenache vines are still alive and we are currently studying them to proceed a Massal selection.
- Our mission is to preserve this unique, precious and historical DNA of the vines.

WE TREASURE OUR VINES





OUR WINES



GRAND VIN 2022



AOC CORBIERES - TERROIR DE LAGRASSE

GRAPE VARIETIES

40% Syrah, 35% Grenache, 20% Carignan, 5% Marsellan

ABV

14%

WINEMAKING

8 to 12 days of vatting, several months of maturation in concrete tanks

TASTING NOTES

Dense garnet color, licorice and blackcurrant buds. roundness, enriched with blackberries.



GRAND VIN 2021



AOC CORBIERES - TERROIR DE LAGRASSE

GRAPE VARIETIES

60% Syrah, 30% Grenache, 7% Carignan, 2% Mourvèdre, 2% Cinsault

ABV

13%

WINEMAKING

Long vinification 20 days of vatting, several months of maturation in concrete tanks

TASTING NOTES

Dense garnet color, precise nose, peppered with aromas of licorice and blackcurrant buds. On the palate, these same notes unfold with suppleness and roundness, enriched with blackberries.



MÉMOIRE D'ALARIC 2020



AOC CORBIERES - TERROIR DE LAGRASSE

GRAPE VARIETIES

80% Grenache, 20% Syrah

ABV

15%

WINEMAKING

Long vinification with 20 days of vatting, several months of maturation in concrete tanks

TASTING NOTES

Beautiful purplish tone, wild strawberry and redcurrant aromas. Its tannins are supple and offer a persistent memory of raspberry and strawberry aromas in the mouth.



MÉMOIRE D'ALARIC 2021



AOC CORBIERES - TERROIR DE LAGRASSE

GRAPE VARIETIES

70% Grenache, 28% Syrah, 2% Carignan

ABV

14%

WINEMAKING

Long vinification with 20 days of vatting, several months of maturation in concrete tanks

TASTING NOTES

Beautiful purplish tone, strawberry and redcurrant aromas. Its tannins are supple and offer a persistent memory of raspberry and strawberry aromas in the mouth.



MAQUIS DES CORBES 2021



AOC CORBIERES - TERROIR DE LAGRASSE

GRAPE VARIETIES

55% Carignan, 35% Grenache, 10% Mourvèdre

ABV

14%

WINEMAKING

Long vinification with 20 days of vatting, several months of maturation in concrete tanks

TASTING NOTES

Intense bright red color. A nose of character: spices, violet, pepper and camphor. Of great finesse, the mouth repeats this spiciness, softened by red fruits.



TERRES MURES 2021



AOC CORBIERES - TERROIR DE LAGRASSE

GRAPE VARIETIES

72% Syrah, 26% Grenache, 2% Cinsault

ABV

13%

WINEMAKING

Long vinification with 20 days of vatting, several months of maturation in concrete tanks

TASTING NOTES

Intense garnet color. On the nose, cherry aromas mix with vanilla and orange and a few herbaceous accents. The finish is long and velvety.



TERRES MURES 2020



AOC CORBIERES - TERROIR DE LAGRASSE

GRAPE VARIETIES

80% Syrah, 20% Carignan

ABV

14,5%

WINEMAKING

Long vinification with 20 days of vatting, several months of maturation in concrete tanks

TASTING NOTES

Intense garnet color. On the nose, cherry aromas mix with vanilla and orange and a few herbaceous accents. The finish is long and velvety.



L'ILE ARDENTE 2021



AOC CORBIERES - TERROIR DE LAGRASSE

GRAPE VARIETIES

77% Mourvèdre, 18% Grenache, 5% Syrah

ABV

13%

WINEMAKING

Long vinification with 20 days of vatting, several months of maturation in concrete tanks. No added sulfite.

TASTING NOTES

Beautiful spicy, peppery notes first on the nose
On the palate, round notes of cumin and morello cherry at maturity with supple tannins.



L'ILE ARDENTE 2019



AOC CORBIERES - TERROIR DE LAGRASSE

GRAPE VARIETIES

50% Mourvèdre, 30% Carignan and 20% Grenache

ABV

14%

WINEMAKING

Long vinification with 20 days of vatting, several months of maturation in concrete tanks. No added sulfite.

TASTING NOTES

Beautiful spicy, peppery notes first on the nose
On the palate, round notes of cumin and morello cherry at maturity with supple tannins.



VIN DOUX NATUREL 1998



VIN DE FRANCE

GRAPE VARIETIES

Grenache

ABV

16%

WINEMAKING

This wine is made from sun-filled Grenache grapes and aged in large barrels with no added sugar. It reveals an over-ripeness free of artifice.

TASTING NOTES

Structured around aromas of prunes, figs, nuts, dried fruits with a pleasant acidity, this wine can be enjoyed as an aperitif as well as with a Roquefort cheese or a chocolate delight.





Carole NAPPEY

carole.nappey@pech-latt.com

+33 6 30 11 15 75